



SHOPFITTING

# HELLO SHOP

Solutions for pluggable electrical installations  
in shopfitting.



“The number of electrical consumers in retail spaces is steadily increasing. Our pluggable and flexible installation systems are helping to meet these requirements.”

---

**FRANK KOBERSTEIN**

Account Manager Retail & Investors, Building Solutions

# HELLO SHOP

- 04** Introduction to pluggable decentralized store cabling
- 06** Advantages for your areas of application
- 08** Solutions for infrastructure cabling
- 10** Solutions for electrical retailers / DIY stores
- 12** Solutions for supply to the point of sale
- 14** Solutions for media shelves and tables
- 16** Solutions for supply to shelving
- 18** Solutions for 1/3 lighting
- 20** Solutions for dimmable lighting
- 22** From conception to rollout
- 24** Standards and the Construction Products Regulation
- 26** Services and servicing packages, gesis® PLAN
- 27** General information + contacts



# OUR ANSWER TO DIGITIZATION IN BUILDINGS + STORES.

---

As an experienced and reliable partner, we can help you satisfy your shopfitting requirements with safety, efficiency, and pluggability. For over 40 years, we have been offering smart solutions with our pluggable connector systems for lighting and infrastructure cabling all the way to the shelf socket.

Customer service systems, digital shelf systems, and accent lighting are becoming standard features, and require a in stores and at the POS suitable technical infrastructure. To this end we offer the best possible installation solutions and energy-efficient automation components. To help electrical installers meet tight completion schedules our gesis® electrical installation system uses pluggable and pre-fabricated components that save a huge amount of time and cost. With gesis® we guarantee a smooth, timely, and stress-free rollout for your retail spaces.



## **ECONOMICAL PLANNING CAPABILITY**

gesis® ensures that project flows can be calculated and guarantees standardized quality in planning and execution.



## **RELIABLE PROCESS QUALITY**

gesis® is the standardized interface for all building installation and automation jobs. The mechanical coding reliably prevents mismatching.



## **QUICKER ASSEMBLY**

Pluggable technology, pre-fabricated cable sets, and a variety of connection technology significantly reduce installation times.

### **THE SYSTEM FOR:**

- + FURNITURE AND HOME FURNISHING STORES
- + LARGE-SCALE SPECIALIST STORES
- + TEXTILE, FASHION, AND SPORTS STORES
- + NON-FOOD (PHARMACIES + SPECIALS)
- + INTEGRATION OF SHOP-IN-SHOP SYSTEMS
- + INTERNATIONAL ROLLOUTS
- + SUPERMARKETS

# SMART **ADVANTAGES** FOR YOUR AREAS OF APPLICATION.

---

Our system components offer additional advantages, enabling you to win major projects and impress your customers:



## **SAFE & SECURE INSTALLATION**

Our gesis® and RST® components feature a locking device to secure them against unintentional loosening. This ensures a fixed installation as specified in DIN EN 61535, and can be quality & safety certified according to international standards. The color and mechanical coding further guarantees safety by preventing the mismatching of different voltage connectors.



## **DIGITIZATION**

Bricks-and-mortar stores are offering more digital services than ever before. Our solutions enable the integration of smart shelves with electronic shelf labeling (ESL) in the store infrastructure. Shelf lighting can be connected at the same time.



## **FLEXIBLE + FUTURE-PROOF**

Our long-standing experience as a market leader and our product quality ensure high contact reliability, a long service life, and high component availability. With our simple and pluggable installation you are optimally prepared for future modifications and extensions. In addition, our components comply with with stringent environmental standards for manufacture and reusability to help you achieve your environmental objectives.





### STRUCTURED

The combination of multi-phase flat cables with flexible outputs, pre-assembled connecting cables, and distribution blocks produces a clear and simple structure with a limited list of components. This ensures efficient maintenance and flexible extension capability.



### MODULAR & VERSATILE

Through our standardized gesis® interface we offer a modular system for all electrical connections. Whether the focus is on lighting, supplying consumers, connecting promotional and demo equipment, mains voltage, three-phase current, or data – with gesis® and RST® you will always be using the right products.



### SAFE

The color and mechanical coding of every system prevents mismatching during the initial installation and during any changes and extensions. All unused connections are touch-proof in principle and can also be closed with covers.

### APPLICATION FIELDS IN WHICH OUR PRODUCTS AND SOLUTIONS ARE USED:



Media shelves



Energy + data supply to the point of sale



Smart shelf



Cable-free quick fitting system for flexible positioning of LED light boxes



Freezer cabinet cabling



Lighting, Tunable White, DALI, KNX, emergency lighting

# SMART **PLUG & PLAY** SOLUTIONS FOR **INFRASTRUCTURE** **CABLING.**

---



## **FLEXIBLE BUSBAR**

---

The flat cable serves as the busbar for flexible energy provision in any position inside the retail space. It is laid ideally along the walls, but inside ceilings or floors is also an option.



## **LIGHT BOX QUICK FITTING SYSTEM**

---

The wall profile easily accommodates the light boxes for illumination. During installation, the automatic mechanical and electrical contact for the lighting is established.



## **PLUG & PLAY IN THE STORE**

---

Seasonal constructions, decoration, or secondary placements can be supplied with electricity and realized in any position easily, quickly, and without any installation work.





- + Separate supply for light and refrigeration
- + Power taps can be placed in any position
- + Completely pluggable solution with no junction boxes



#### APPLICATION

With store concepts changing all the time, it is essential to be able to respond quickly. Refrigerators, refrigerated counters, and light displays are generally supplied from the wall or ceiling and then require an adjustment of the electrical connection points.



#### SOLUTIONS

- Industrially prefabricated system components
- gesis® NRG flat cable with 3-pole, pluggable adapters with phase selection
- gesis® CLASSIC cabling to the consumers



#### ADVANTAGES

- Fast, easy, and safe installation
- High functional reliability through prevention of mismatching
- Simple adjustment of the installation to local conditions
- Subsequent extensions made easy thanks to pluggable components

# EASY **PLUG & PLAY** SOLUTIONS FOR ELECTRICAL RETAILERS / DIY STORES.



## INFRASTRUCTURE CABLING

The retail space is supplied via flexible 5G10 mm<sup>2</sup> flat cables. This markedly reduces the cabling required and provides unlimited energy within the area.



## SYSTEM DISTRIBUTORS

Our system distributors secure energy supply with locally fused gesis® outputs. New load centers can be created by additional system distributors at any time.



## DEVICE SOCKETS

Our sockets with gesis® connection are simply pluggable and secure energy supply to end devices. They are also available with optional fine surge protection.


**APPLICATION**

In electrical retail outlets and DIY stores, larger electrical loads are required in a variety of ever-changing areas, such as shelves, sections, and recesses. Sockets also have to be made available flexibly.


**SOLUTIONS**

- Industrially prefabricated system components
- Prefabricated gesis® system distributors with connection cable and flat cable adapter
- Local fuse protection and pluggable outputs to the shelves
- Energy distribution as per DIN EN 61535 as part of the fixed installation


**ADVANTAGES**

- Fast, easy, and safe installation
- High functional reliability due to defined, symmetrical structures
- Easy adjustment to change load centers
- Modifications at the socket level can be done by electrically trained staff



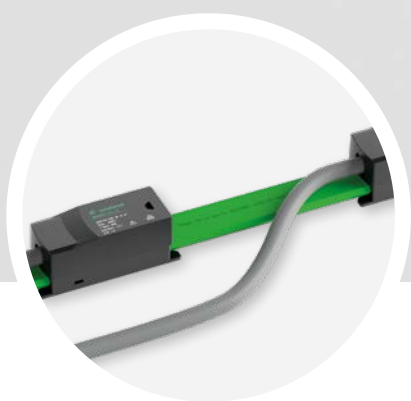
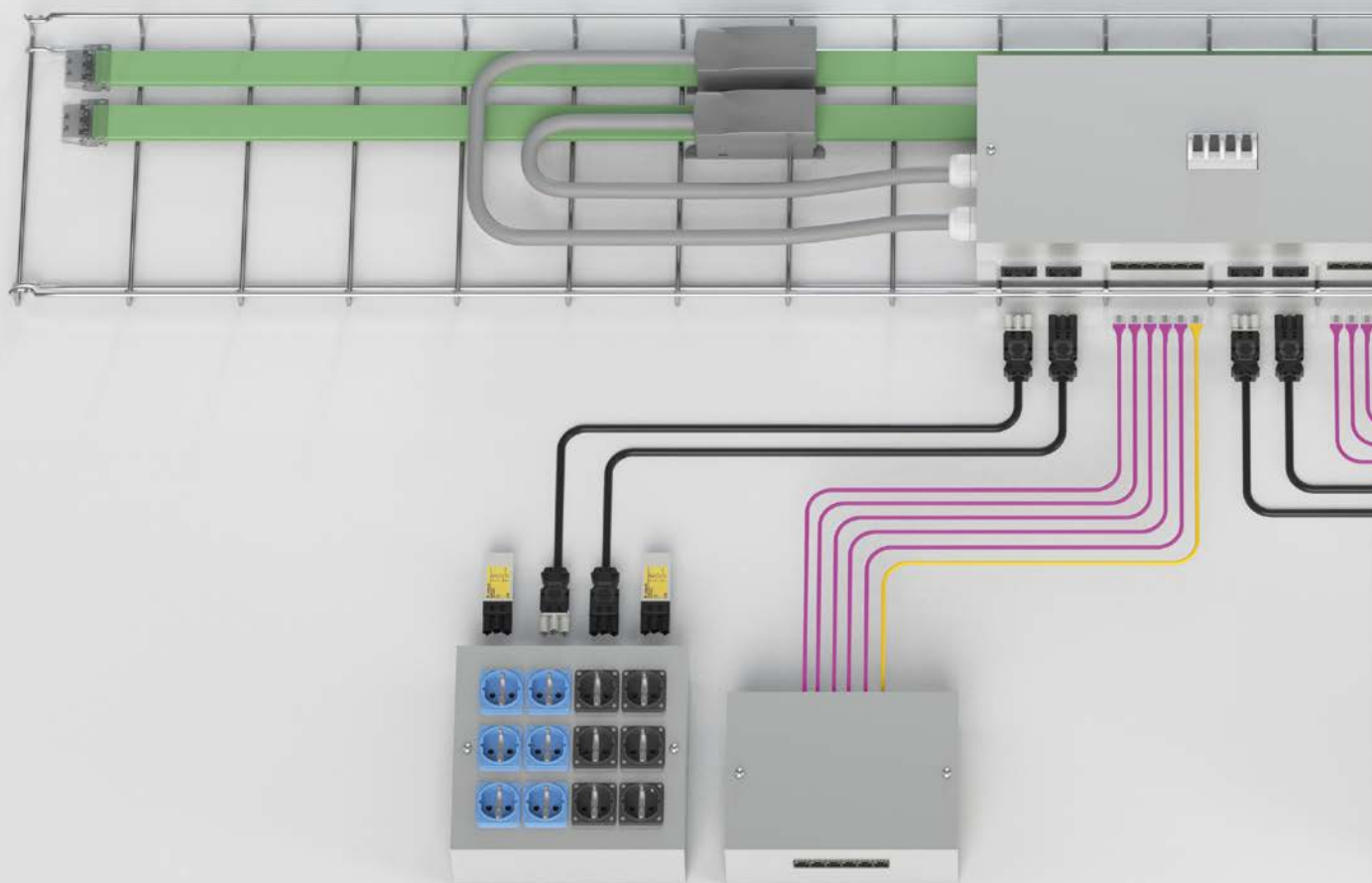
+ Power taps can be placed in any position

+ Modular installation



# SMART **PLUG & PLAY** SOLUTIONS FOR **SUPPLY TO THE POINT OF SALE.**

---



## **INFRASTRUCTURE CABLING**

---

The checkout areas are supplied via our flexible 5G10 mm<sup>2</sup> flat cables with two networks. This greatly reduces the cabling required.



## **SYSTEM DISTRIBUTORS**

---

Our system distributors are equipped with fused pluggable gesis® outputs. They are responsible for the energy supply and simultaneously connect the IT systems to each other via RJ45.



## **SOCKET DISTRIBUTORS**

---

Our sockets can also be connected in a pluggable manner and offer maximum flexibility and order in the supply to all consumers at the checkout.



### APPLICATION

The gesis® system distributor on the cable tray is supplied with general and UPS networks. There are 12 data cables laid in the IT part. The connection from the ceiling to the twin checkout desk is carried out using gesis® CLASSIC connection cables and patch cables. One system distributor with sockets and one with 6 x RJ45 data connections is installed in each checkout.



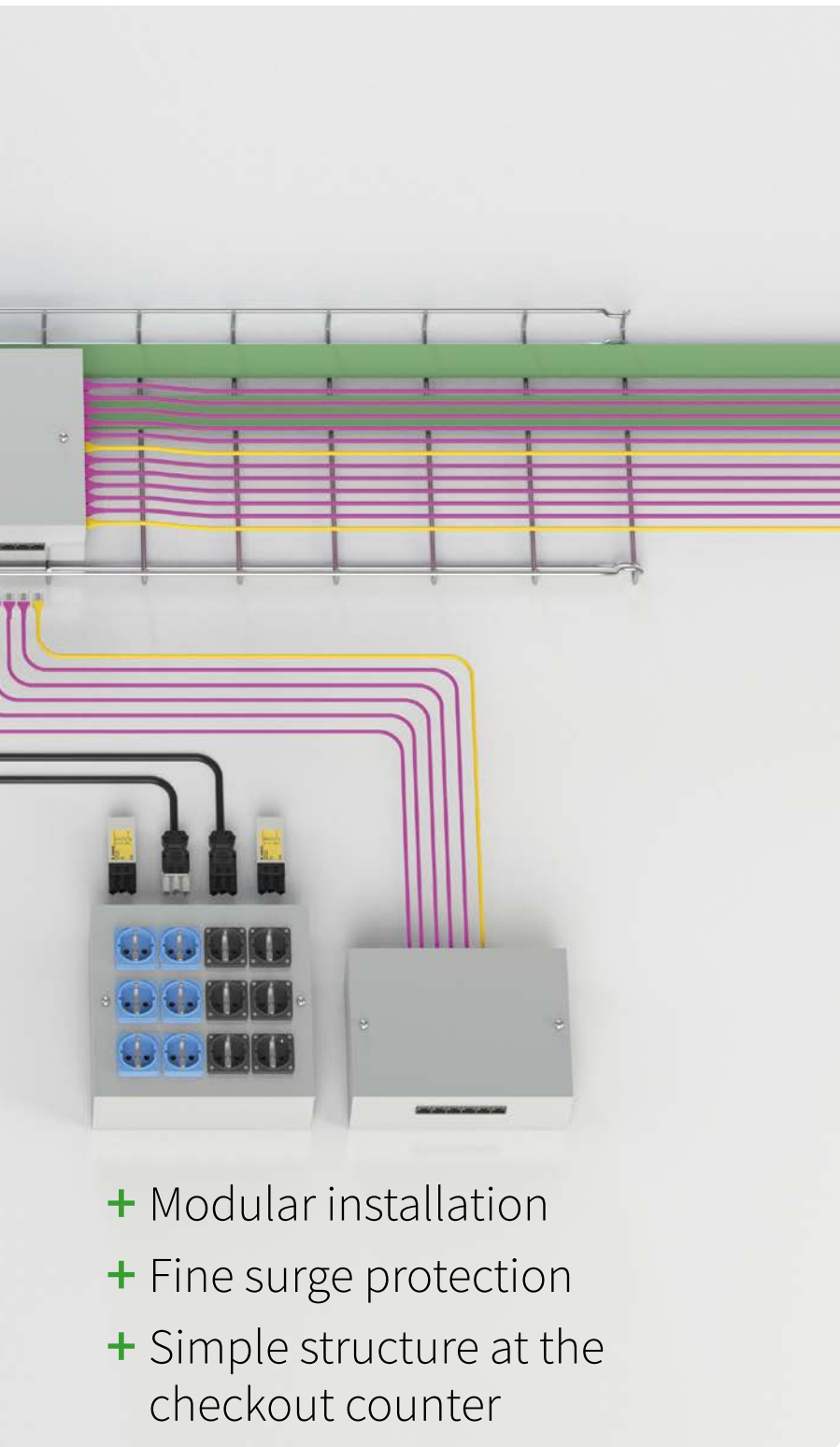
### SOLUTIONS

- Industrially prefabricated system components
- gesis® NRG flat cable system for energy supply
- gesis® system distributor for modular pluggable decentralized energy distribution and fuse protection
- gesis® installation connector system for long service intervals
- Pluggable sockets supplied via gesis® for simple energy supply within the checkout area
- Optional positioning of a switch in the checkout desk



### ADVANTAGES

- Fast, easy, and safe installation
- High functional reliability due to clear structures
- Simple adjustment of the installation to local conditions
- Subsequent extensions made easy thanks to pluggable components

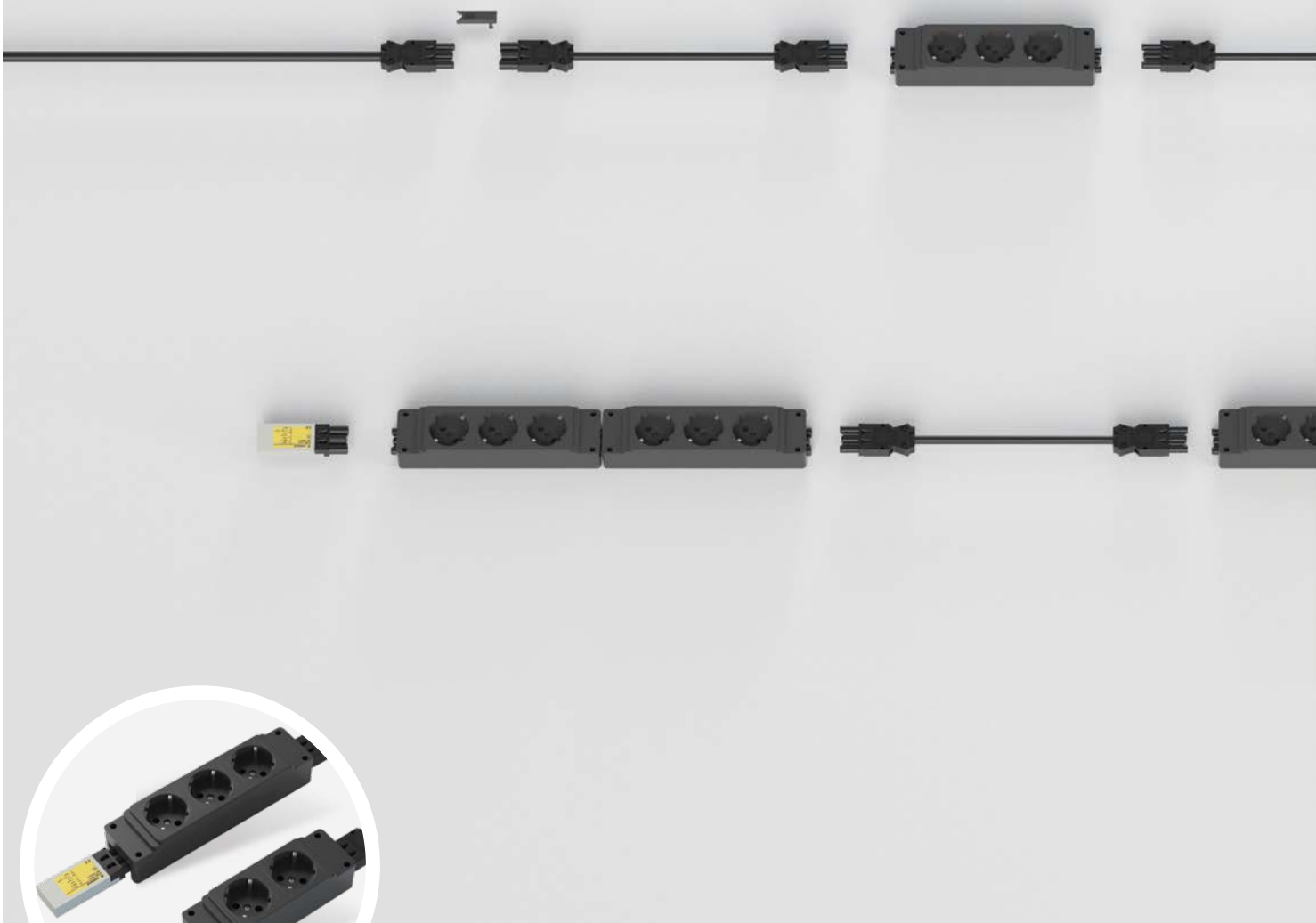


- + Modular installation
- + Fine surge protection
- + Simple structure at the checkout counter



# EFFICIENT **PLUG & PLAY** SOLUTIONS FOR **ENERGY DISTRIBUTION** IN **MEDIA SHELVES AND TABLES.**

---



## **DEVICE SOCKETS**

---

Our safety sockets with gesis® connection secure energy supply to consumers and can also be extended to include fine surge protection as an option.





- + Modular installation
- + Fine surge protection
- + Flexible infrastructure



#### APPLICATION

In electrical retail outlets, media tables and shelves are used to present and demonstrate various small electrical appliances. These are usually supplied via linked multiple sockets. Besides appearing chaotic and unattractive, this kind of cabling is not permissible as it may prevent safety elements from triggering, increasing the risk of a fire.



#### SOLUTIONS

- Industrially prefabricated system components
- gesis® pluggable multiple sockets for easy and safe energy supply with a connection level as per DIN EN 61535
- Pluggable fine surge protection to protect the connected appliances



#### ADVANTAGES

- Fast, easy, and safe installation
- High functional reliability through prevention of mismatching
- Simple adjustment of the installation to local conditions
- Subsequent extensions made easy thanks to pluggable components



# FLEXIBLE **PLUG & PLAY** SOLUTIONS FOR **SUPPLY TO SHELVING.**

---

SHELF 1



SHELF 2



## **PLUGGABLE SUB-DISTRIBUTION**

---

Our completely pluggable distributors can be wall-mounted and equipped with project-specific safeguards.



## **PLUGGABLE JUNCTION BOX**

---

The supply is allocated to various shelves or shelf levels, for example, using a pluggable junction box without any effort.



## **PLUGGABLE SURGE PROTECTION**

---

Our local overvoltage protection is simply plugged in and provides all connected devices with reliable protection against a power surge.





### APPLICATION

The devices on the store shelves have to be supplied with energy so that they can be displayed while operational. In the event of a localized fault, only small areas should lose power.



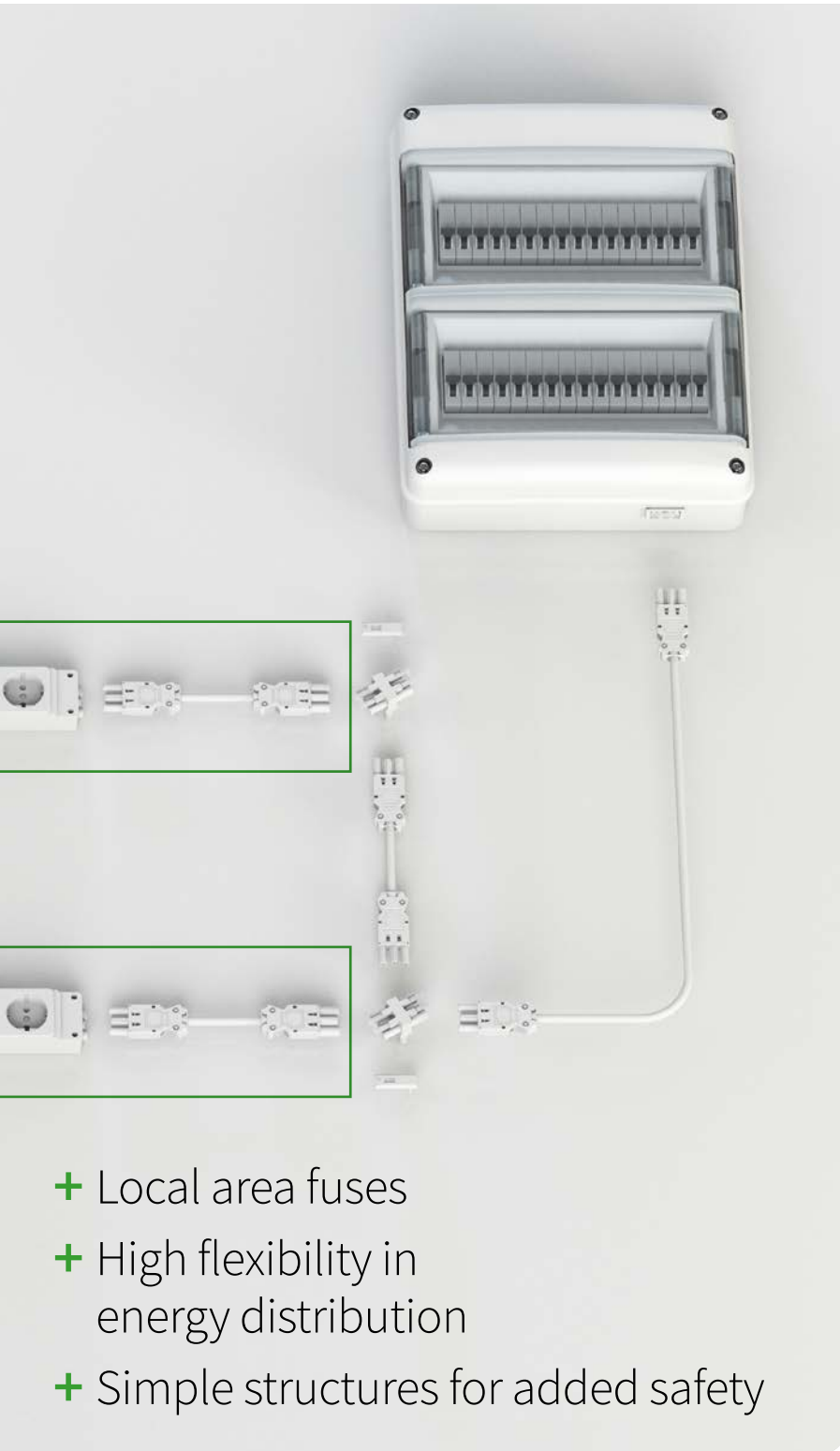
### SOLUTIONS

- Industrially prefabricated system components
- Decentralized fuse protection in the space with gesis® WIV distributor for local protection
- gesis® CLASSIC installation plug connector system as per DIN EN 61535 for supply to the distributed multiple sockets



### ADVANTAGES

- Fast, easy, and safe installation
- High functional reliability through prevention of mismatching
- Simple adjustment of the installation to local conditions
- Subsequent extensions made easy thanks to pluggable components



- + Local area fuses
- + High flexibility in energy distribution
- + Simple structures for added safety





## EASY **PLUG & PLAY** SOLUTIONS FOR **1/3 LIGHTING.**

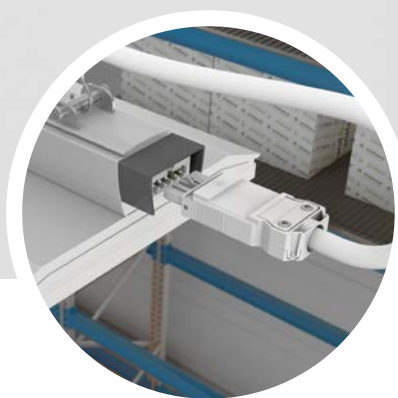
---



### **ENERGY SUPPLY**

---

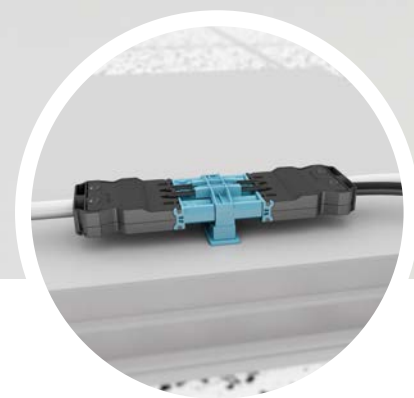
Power taps can be placed anywhere along the flat cable. Prior to establishing contact with piercing screws the phase selection is made. Subsequent changes are possible without the need to move the tap.



### **LUMINAIRE CONNECTION**

---

The installation system offers suitable pluggable connections for various types of luminaires. Color and mechanical codings prevent mismatching.



### **DIMMING APPLICATIONS**

---

Luminaires can be supplied with energy via flat cable using a direct and pluggable approach. For dimming applications, pastel blue connectors are available.



- + Easy group assignment of luminaires via phase selection on the flat cable adapter
- + Flexible luminaire positioning



#### APPLICATION

The easiest way to power retail spaces is with the established 1/3 circuit. The group assignment with 5-pole cabling systems can be determined by the choice of phase. Lighting is made switchable for nights and cleaning times, providing flexibility and efficiency.



#### SOLUTIONS

- Industrially prefabricated system components
- gesis® NRG flat cable system for easy placement and removal of pluggable outputs
- 3-pole, pluggable flat cable outputs with phase selection for simple and flexible luminaire group assignment



#### ADVANTAGES

- Fast, easy, and safe installation
- High functional reliability through prevention of mismatching
- Simple adjustment of the luminaire groups to local conditions
- Subsequent extensions made easy thanks to pluggable components



# EASY **PLUG & PLAY** SOLUTIONS FOR DIMMABLE **LIGHTING**.

---



## **INDOOR SOLUTION**

---

The indoor version of the system can be executed flexibly with round cables and/or flat cables. Changes and extensions are part of the installation concept right from the outset.

## **DISTRIBUTION OPTIONS**

---

Adjustment and extension of the lighting is made extremely easy with our pluggable distributors – no relevant installation work required.

## **LUMINAIRE CONNECTION**

---

The luminaires no longer have to be opened during on-site installation thanks to the pluggable device connection or pre-assembled connection cable; they are immediately ready to use.



#### APPLICATION

Our 7-pole infrastructure cabling with dimming signal and three-phase current is particularly popular for minimizing the voltage drop in systems that span great distances. With its elevated protection rating, it is also ideal for harsh environments.



#### SOLUTIONS

- Industrially prefabricated system components
- RST® installation plug connector system with protection rating up to IP69
- 7/5-pole compact distributors for single-phase power tap with dimming signal



#### ADVANTAGES

- Fast, easy, and safe installation
- High functional reliability through prevention of mismatching
- Simple adjustment of the installation to local conditions
- Subsequent extensions made easy thanks to pluggable components



- + Plug & play installation
- + Dimmable luminaire
- + IP69





# FROM **CONCEPTION** TO INTERNATIONAL **ROLLOUT**.

---



## **IDEA**

Future-oriented retail space planning calls for innovative solutions. You should consider an installation that is decentralized and pluggable.



## **DESIGNING THE CONCEPT**

We will gladly produce a concept for you to present to building owners or decision-makers.

**TECHNICAL SUPPORT:** Phone +49 951 9324-996 · E-mail: [building@wieland-electric.com](mailto:building@wieland-electric.com)

**CONTACT YOUR LOCAL REPRESENTATIVE VIA OUR HEAD OFFICE:**

Phone +49 951 9324-0 · E-mail: [info@wieland-electric.com](mailto:info@wieland-electric.com)



### **WORKING OUT THE DETAILS**

You are already in the pre-planning/design development phase: We will assist you with the implementation of your concrete plan through to the estimation of costs and, finally, the invitation to tender.



### **INVITING TENDERS AND TENDERING**

The invitation to tender is on the market. The contractors will receive the tenders from us and will apply to execute the project.



### **ORDERING**

Orders are placed directly through our Customer Service or our eShop: [eshop.wieland-electric.com](http://eshop.wieland-electric.com).



### **DELIVERY**

Your items will be picked to your wishes and delivered on time to your company or to the place of use.



### **FURTHER SERVICE**

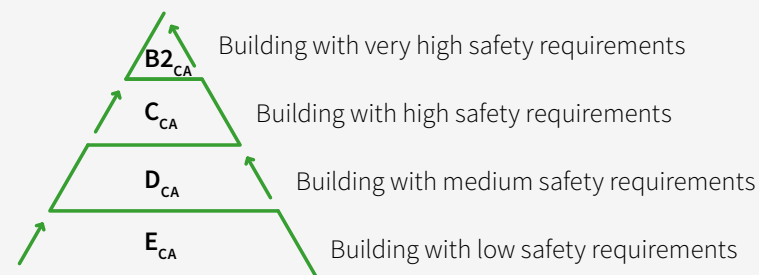
Do you need support for your project? Our team in Bamberg and your local representative will be happy to help you. Please contact us.

# STANDARDS (CPR) OVERVIEW

## CONSTRUCTION PRODUCTS REGULATION

Since June 10, 2016 all cables permanently installed in a building have been covered by the CPR. Since July 1, 2017, all CPR cables have had to bear CE marking. German construction legislation does not currently specify which fire classes are to be used where. The minimum requirement is class E<sub>ca</sub>.

### CLASSIFICATION OF STANDARDS



### CPR – PROPOSAL OF THE GERMAN CABLE INDUSTRY | AS OF SEPTEMBER 2017

Description		Building	Escape route
Free-standing buildings	up to 7 m high, no more than 400 m <sup>2</sup>	E <sub>ca</sub>	
Buildings	up to 7 m high, no more than 400 m <sup>2</sup>	E <sub>ca</sub>	
Other buildings	up to 7 m high	E <sub>ca</sub>	B2 <sub>ca</sub> s1 d1 a1
Other buildings	up to 13 m high, up to 400 m <sup>2</sup> per story	E <sub>ca</sub>	B2 <sub>ca</sub> s1 d1 a1
Other buildings, including underground buildings		C <sub>ca</sub> s1 d2 a1	B2 <sub>ca</sub> s1 d1 a1
Office/administration	rooms larger than 400 m <sup>2</sup>	C <sub>ca</sub> s1 d2 a1	B2 <sub>ca</sub> s1 d1 a1
Restaurants/hotels	more than 40 guest places, more than 12 beds	C <sub>ca</sub> s1 d2 a1	B2 <sub>ca</sub> s1 d1 a1
Sales outlets	larger than 800 m <sup>2</sup>	C <sub>ca</sub> s1 d2 a1	B2 <sub>ca</sub> s1 d1 a1

Sub-classification note: the lower the numerical value stated, the less damaging the behavior.



s – smoke



d – droplet formation



a – toxic gases

### CASCADING OF MULTIPLE SOCKETS

Extendable fixed multiple sockets in the feed-through level (input and output GST18) can be cascaded subject to compliance with the installation instructions according to DIN VDE 0100, provided that these are linear extensions and not branches.

If these can be permanently installed (e.g. permanent connection to the product carrier or out of reach of laypersons), the installation can be extended to the maximum admissible cable length, provided that the total connection load of 3,500 watts and the maximum current of 16 A are not exceeded.



# STANDARDS (DGUV V3) OVERVIEW

## INSPECTION OF ELECTRICAL EQUIPMENT

### Repeat inspection of electrical equipment – inspection intervals

As an example, the execution instructions in § 5(1)(2) of the accident prevention regulation provide guidelines for inspection intervals which apply in normal operating and environmental conditions:

Installation / equipment	Guideline and max. value for inspection interval	Type of inspection	Inspector
Electrical installations and fixed equipment	4 years	Good working order	Qualified electrician
Portable electrical equipment Extension and appliance connection cables with plug-in devices Connection cables with plug Movable cables with plug and fixed connection	Guideline: 6 months. With a failure rate of < 2 % the inspection interval can be extended to 2 years maximum	Good working order	Qualified electrician Also someone trained in electrical engineering if suitable measuring and testing devices are used.

Table: DGUV Regulation 3, Electrical installations and equipment (accident prevention regulation), execution instruction in § 5(1)(2).

### Evaluation of different retail space installations

	Fixed installation + fixed electrical equipment	Fixed installation pluggable + fixed electrical equipment	Portable equipment
<b>Operator</b>	Qualified electrician	Person trained in electrical engineering	Layperson – following all the relevant instructions
<b>Material</b>	NYM cable, cable support systems, distributor boxes, only fixed luminaires	Wieland connector system, fixed or portable luminaires	Schuko® sockets, only portable luminaires
<b>Compliant with VDE 0100</b>	✓	✓	–
<b>Compliant with IEC 61535</b>	–	✓	–
<b>Flexibility</b>	– In terms of effort, any change corresponds to a new installation.	++ Easy to do and can be carried out by employees on-site.	++ Easy to do and can be carried out by employees on-site.
<b>Safety</b>	++	++	–
<b>Costs</b>	€€€	€€	€
<b>Costs for rpt inspections</b>	€€	€	€€€

# OUR SERVICES AND SERVICING PACKAGES

---

With an extensive range of services and servicing packages, Wieland Electric is a highly capable partner, assisting its customers worldwide with the conception, planning, and implementation of smart electrical installations.

## WE ARE WITH YOU ALL THE WAY

- From the first idea through to concept development.
- From the luminaire plan to the cabling concept.
- From the concept to the quantity survey and tendering material and through to the logistics to suit your needs.
- From the configuration and optimization of the system distributors to their industrial production and through to extensive documentation.

## OUR SERVICES

- + CONCEPTION
- + PLANNING SUPPORT
- + IMPLEMENTATION
- + PROJECT PLANNING
- + OPTIMIZATION
- + REALIZATION
- + PRODUCTION
- + LOGISTICS

# GESIS® PLAN

---

## THE CONCEPTUAL DESIGN TOOL

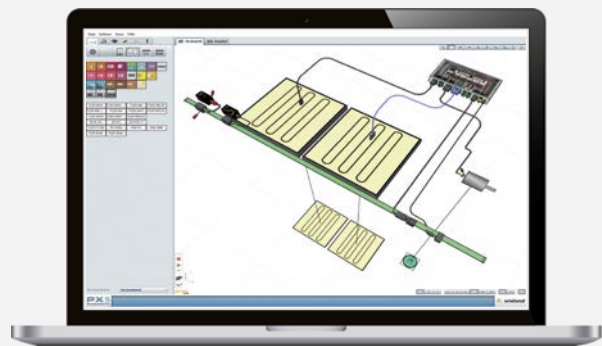
Architects and electrical planners cannot perform their jobs without software planning tools, especially when reliable information regarding project scope, scheduling, and cost estimates is required.

Wieland Electric offers the gesis® PLAN software for planning pluggable electrical installations with gesis®. This conceptual planning tool uses CAD building data to generate installation drafts as well as parts and price lists.

gesis® PLAN also independently checks the current load of cables and detects errors. The planner can locate them immediately in the detailed 3D views.

---

Request gesis® PLAN free of charge:  
[gesisplan@wieland-electric.com](mailto:gesisplan@wieland-electric.com)





# INFO TO GO

All brochures from Wieland Electric are available for download on our website.



<https://www.wieland-electric.com/en/support/downloads>

Interesting for you

### GESIS® CATALOG

Pluggable  
Electrical installation  
Part No. 0670.1



### GESIS® ELECTRONIC CATALOG

Decentralized building automation  
with plug & play  
Part No. 0700.1

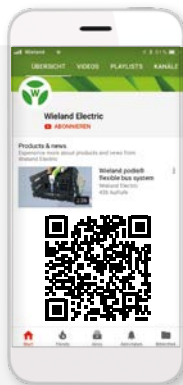


### GESIS® NRG

Application examples for  
the flexible busbar  
Part No. 0663.1



**Wieland on YouTube**  
See our solutions  
in motion



<https://www.youtube.com/user/WielandElectric>



**Technical consultation**  
Building Solutions

E-mail: [building@wieland-electric.com](mailto:building@wieland-electric.com)

Worldwide: <https://wie.li/contactinternational>



# ONLY ONE TAP AWAY

### Our Wieland E-Shop

Over 25,000 products - anytime

In our online store you will find  
all the information about our products,  
prices, and technical data.

Order easily and conveniently online,  
and check availability.

<https://eshop.wieland-electric.com>

Scan QR code –  
view products in the  
E-SHOP.





# wieland

## HEADQUARTERS

Wieland Electric GmbH  
Brennerstraße 10 – 14  
96052 Bamberg · Germany

---

Phone +49 951 9324-0  
Fax +49 951 9324-198  
info@wieland-electric.com

0417.1 S 04/22

Represented in over 70 countries worldwide:

[www.wieland-electric.com](http://www.wieland-electric.com)